

CUSTOMER MEMO: MTWDeck Ledger Bracket

The Metwood MTWDeck Bracket can be utilized on structures with stone or masonry veneer as an alternate deck ledger connection. Section R507.2.2 of the 2015 IRC states, "Deck ledger connections not conforming to Table R507.2 shall be designed in accordance with accepted engineering practice." The MTWDeck Bracket has been designed in accordance with accepted engineering practice and has been evaluated and achieved a Code Compliance Research Report.



CODE
COMPLIANCE



Intertek
CCRR-0261

MTWDeck Bracket Maximum Spacing

Band of Structure Species	DECK JOIST SPAN LESS THAN OR EQUAL TO: (feet)						
	6	8	10	12	14	16	18
<i>Douglas Fir-Larch and Southern Pine</i>	8-0	8-0	6-0	5-0	5-0	4-0	3-0
<i>Spruce Pine Fir and Hem Fir</i>	8-0	6-0	5-0	4-0	3-0	3-0	3-0

- **Band of Structure:** The MTWDeck Bracket must be attached to a 2-inch (51 mm) nominal lumber band joist plus an additional 2" nominal lumber blocking that bear on a sill plate or wall plate. If the MTWDeck Bracket is attached to a 1-inch-thick engineered wood product, the 2" nominal lumber blocking is still required.
- **Flashing:** All MTWDeck Brackets and Ledgers shall be flashed to prevent water from contacting the house band joist.
- **Section R507:** All other connections and design of a wood-framed deck shall be in accordance with Section R507 of the 2015 and 2018 IRC.

Building Solution – DECK LEDGER

Utilize **METWOOD DECK LEDGER BRACKET** to Install a Deck Ledger
on a Project With Masonry Veneer

***All Fasteners for Wood Application Included*

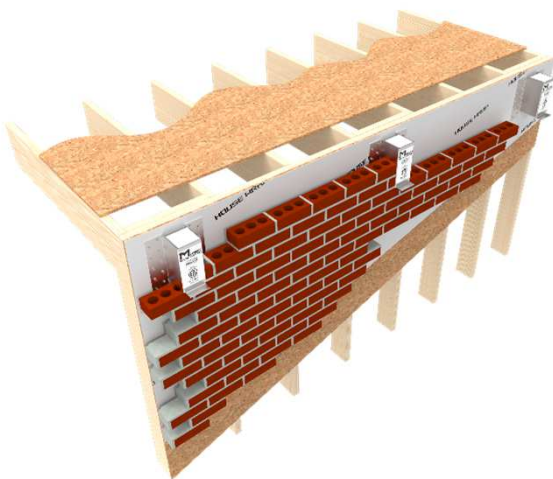
CODE
COMPLIANCE



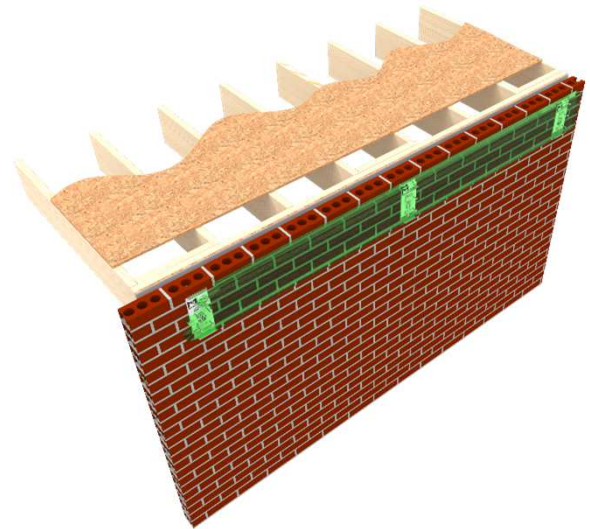
Intertek
CCRR-0261



**Step 1 – Mount Deck Bracket
To Double Blocking**



**Step 2 – Install brick, stone or other veneer
Around MTWDeck Brackets**



**Step 3 – Attach Deck Ledger
To Face of Brackets**